

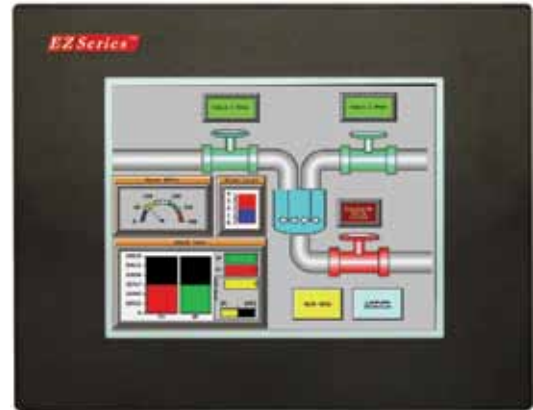
# EZ SE Series 10" TFT Color (SE Series)

## 10" Color EZ SE Series (10.4" TFT)

EZSeries 10" SE Series have a White LED display, 75K hrs, 10.4" diagonal touch screen with 640x480 pixel resolution. This model is a new addition to EZSeries line.

### EZ SE Series feature:

- 10.4" diagonal color TFT
- Low-profile slim bezel design
- 128 colors
- NEMA 4, 4X
- 320x240 pixel resolution
- 512K RAM
- 1MB flash card for memory backup
- **White LED**
- **75,000 hour bulb half-life**
- **Built-in USB (Ethernet model)**
- 192 touch cells (16x12)
- 1/4" gasket and four DIN mounting clips for NEMA 4, 4X
- 2.38" (60.53mm) installed depth
- Has all EZSeries objects
- Has all 4,000 Library symbols
- Touchscreen response time 1 sec.
- Programmed with EZSeries programming software



Model Number	Interface	Price	Del.
EZD-T10C-S	All Serial drivers	\$999	STK
EZD-T10C-SE	All Serial and Ethernet drivers. Ethernet IP with array logic, ControlLogix, MicroLogix and SLC, DirectLogic E-Com, Modbus TCP/IP, EZ IP, GE SRTCP	\$1099	STK

Note: SE Series are identical to standard EZSeries except they do not have Real Time Clock, RAM expansion, Flash card.

